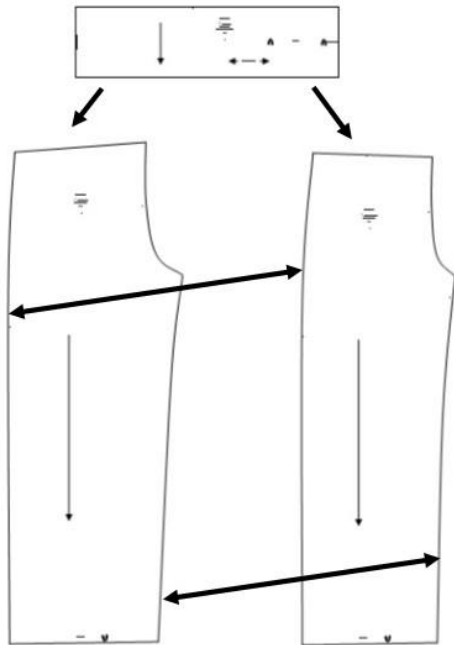


CORTE/CUT

- 1.- Pieza delantera. 2 Cortes
- 2.- Pieza trasera. 2 Cortes
- 3.- Pretina. 1 Corte con tela doblada

- 1.- Front piece. 2 cuts
- 2.- Rear piece. 2 cuts
- 3.- Waistband. 1 Cut with folded fabric



CONFECCION/MAKING

- A.- Coser los costados
- B.- Coser la entrepierna
- C.- Coser el tiro delantero y trasero
- D.- Colocar la pretina

- A.- Sew the sides
- B.- Sew the crotch
- C.- Sew the front and rear shot
- D.- Place the waistband

TELA Y CONSUMO/GENDER TOTAL

Para la T- XS—1,15 mts./ T-M—1,20 mts/ T-XL-1,60 mts
Cortes, en tela de 1,50 mts de ancho

For the T- XS — 1.15 meters / T-M — 1.20 meters / T-XL
-1.60 meters
Cuts, in fabric of 1.50 meters wide

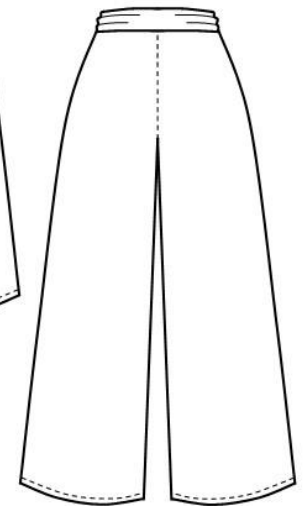
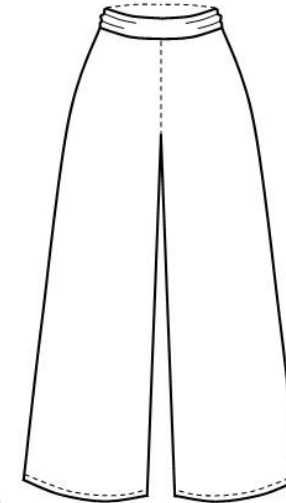
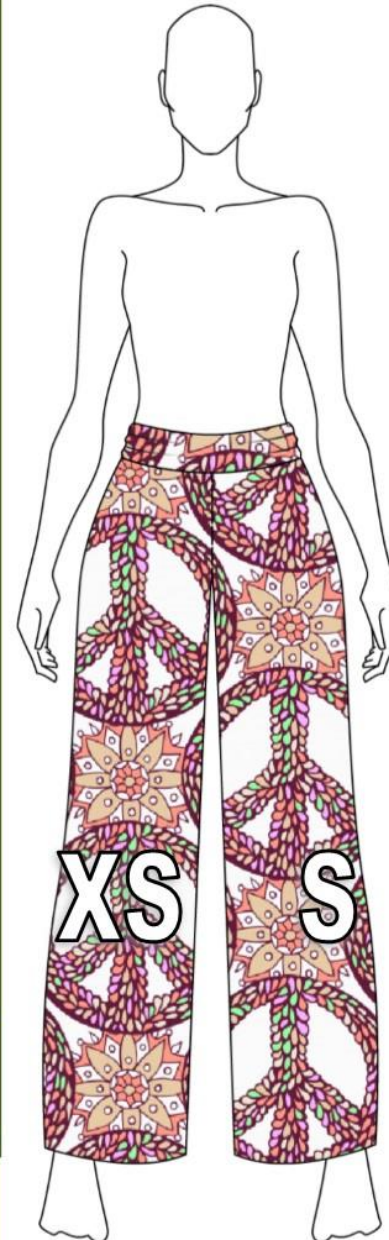
INSTRUCCIONES/INSTRUCTIONS

Genero: Seda o Vilella estampada

Genre: Silk or Vilella stamped

**CODIGO
473**

PANTALON ANCHO



XS

S

M

L

XL

- Adquiere Patrones Digitales. Descarga e imprime en casa.
- Matrices para Maquinas Bordadoras. Encuentra PES, JEFF, XXX
- Patrones Impresos, adquiere tus compras online con despachos a todo Chile.
- Encuentra puntos de ventas mas cercanos. Servicios, Articulos y mas en un solo lugar.

www.puntopatrones.com



Punto Patrones

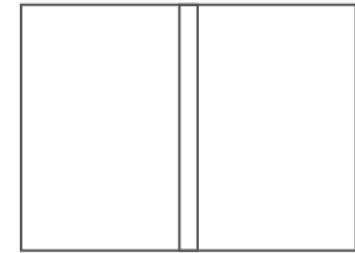




- PATRONES INCLUYEN 1 CENTIMETRO DE COSTURA PARA CORTAR Y ARMAR
- CONFIGURE SU IMPRESORA AL MISMO FORMATO DE HOJA QUE ELIGIO
- PATTERNS INCLUDE 1 CENTIMETER OF SEWING TO CUT AND ASSEMBLE
- CONFIGURE YOUR PRINTER TO THE SAME PAPER FORMAT YOU CHOOSE



 **JUNTAR HOJAS**
PUT PAPER TOGETHER

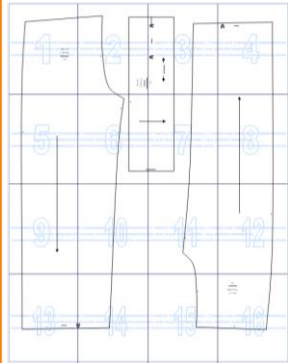


 **NO MONTAR**
DO NOT MOUNT PAPER

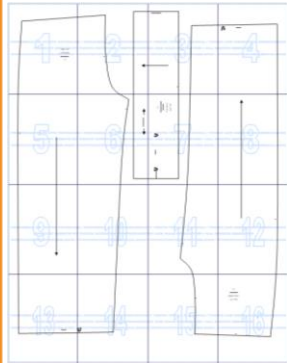
ARMADO DE LAS HOJAS POR TALLAS

PAPER ASSEMBLY

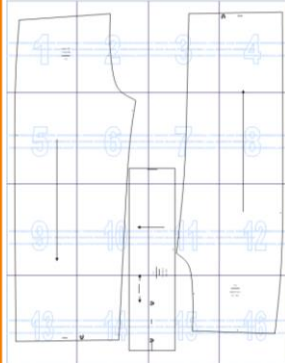
XS



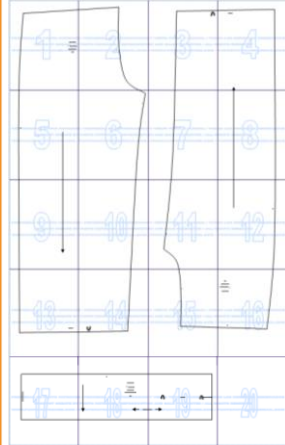
S



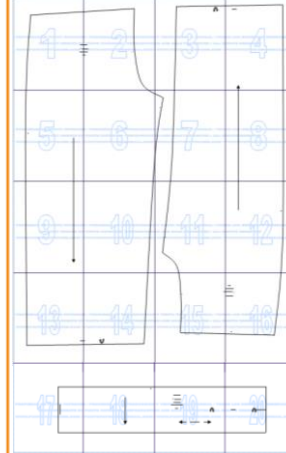
M



L



XL



XXL